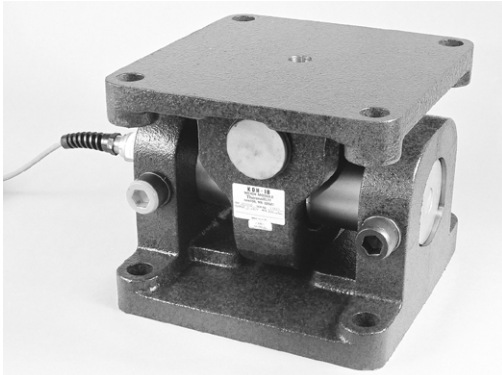


## High Capacity Weigh Module



### FEATURES

- Capacity range: 200K and 300K lb (90.7K and 136K kg)
- Low profile and low deflection with symmetrical mounting bolt pattern for easy installation
- Floating design allows for thermal expansion and contraction
- Seismic and wind resistant self-checking design
- FM and CSA approved for hazardous locations

### DESCRIPTION

KDH-1B series weigh modules use a unique double-ended shear beam design that produces a compact, high strength, inventory or process weighing sensor. For use on large inventory and process vessels, the modules offer checkless (no check or stay rods) design, low profile, and symmetrical bolt spacing.

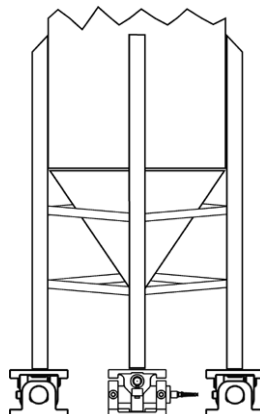
The floating top plate and yoke arrangement allows the module to accommodate vessel thermal expansion and contraction without measurement errors. Sideload resistance provides high accuracy on systems subjected to wind loads and vibration. The integral conduit fitting and potted cavities give superior humidity and hose-down protection.

Ideally suited for weighed structures requiring inherent 'overdesign', KDH modules bolster the engineering task of meeting or exceeding ANSI/ASCE 7-98 standards. KDH-1B modules excel where adverse forces are created by wind, thermal expansion, and earthquakes.

### APPLICATIONS

- Product inventory weighing/control
- Large outdoor silos
- Conveyor belt force measurement

### CONFIGURATION



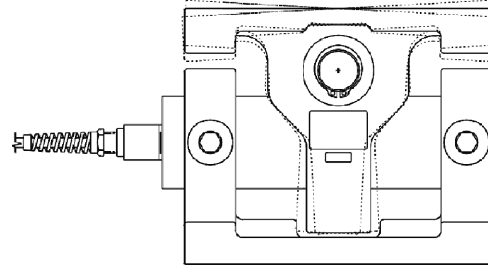
**DESIGN FEATURES**

The cylindrical double-ended shear beam module is designed to measure shear stresses induced by an applied load without errors caused by thermal expansion. The combination beam and mounting hardware are ideally suited for use on large outdoor storage vessels where temperature, wind, and possibly seismic forces are encountered.

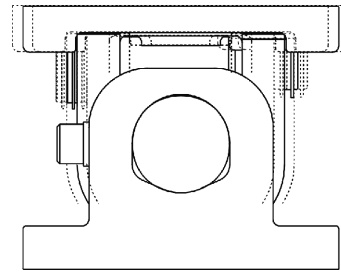
The cylindrical tube-type transducer offers several advantages over rectangular shear beam designs. Superior resistance to moisture contamination is accomplished by eliminating gaged pockets on the outside of the beam. Instead, the KDH uses strain gages applied to the inside wall of the tube. In addition, the cable entry is equipped with a conduit fitting for cable protection and is internally potted.

Structurally, the cylindrical tube is equally strong in both the vertical and horizontal planes. Unlike rectangular shear beams that are typically weaker in the horizontal plane, KDH modules are less affected by sideloads induced by vibration, wind, or process dynamics.

The design of the mounting hardware eliminates the need for pins and/or bolts to attach the beam. This reduces the adverse effects of varying edge and point stresses and makes the overall module less susceptible to calibration changes. Low profile design, symmetrical mounting bolt patterns, and optional top plates make KDH modules easy to install on new or existing structures and vessels.

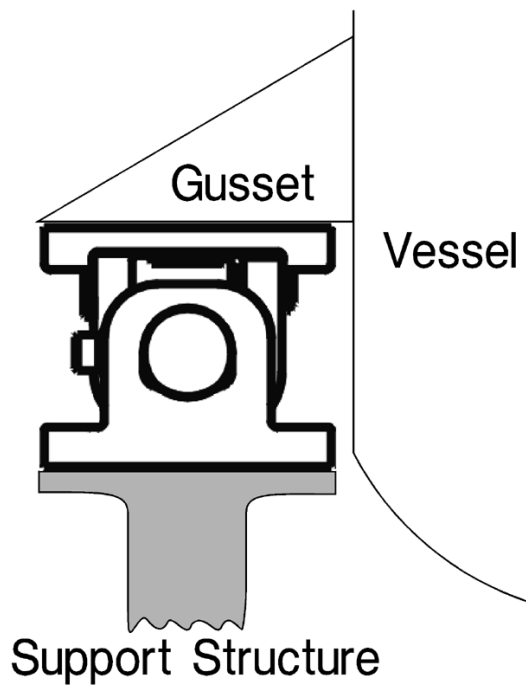
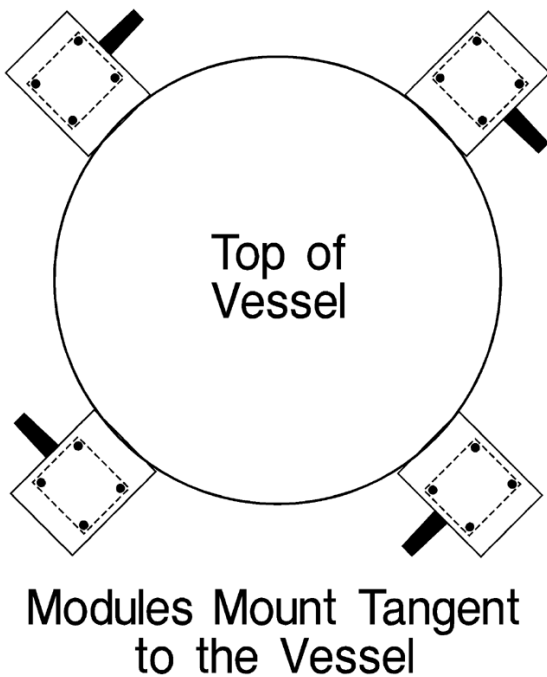


Accommodates construction variations +/-3°.

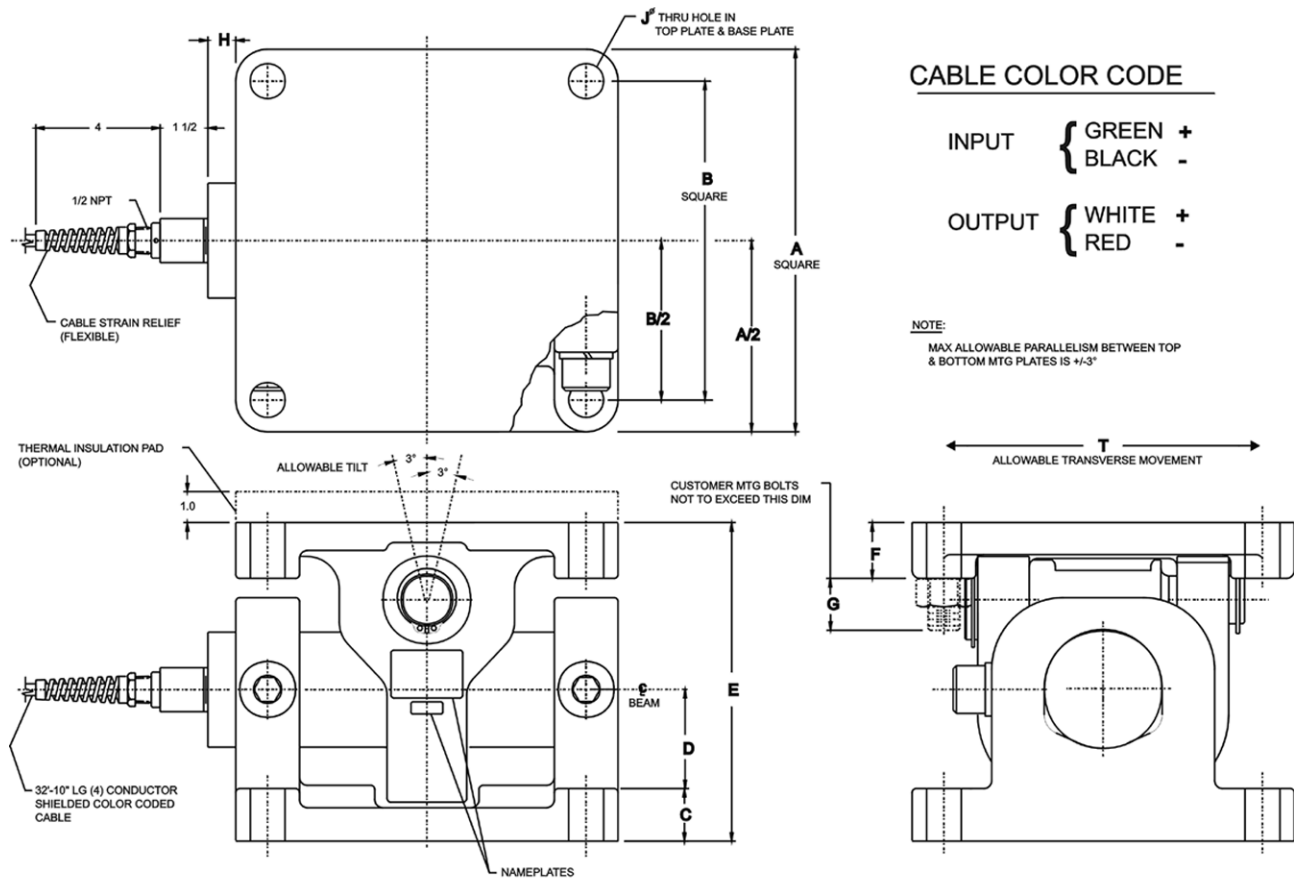


Thermal expansion/contraction compensation.

**TYPICAL KDH-1B WEIGH MODULE MOUNTING ARRANGEMENTS**



**DIMENSIONS**



CAPACITY (lbs)	A	B	C	D	E	F	G	H	J	T
200,000	12.00	10.00	1.65	3.11	9.99 <sup>+/-0.035</sup>	1.75	1 5/8	7/8	1 3/32	.47
300,000	14.00	11.00	1.90	3.49	10.85 <sup>+/-0.035</sup>	1.75	2.0	.60	1 5/8	.75

Dimensions shown in inches.

### SPECIFICATIONS

#### Performance

Capacity	200K and 300K lb (90.7K and 136K kg)
Rated Output (R.O.)	2.0mV/V ± 0.1% mV/V
Zero Balance	1% R.O.
Combined Error (best fit)	0.10% R.O.
Creep (20 minutes)	0.03% R.O.
Repeatability	0.02% R.O.

#### Electrical

Input Resistance	700 ohms ± 7 ohms
Output Resistance	700 ohms ± 7 ohms
Recommended Excitation	10Vac or dc (20V max.)

#### Temperature

Safe Range	-34.4 to 104.4°C (-30 to 220°F)
Compensated Range	-1 to 54°C (30 to 130°F)
Temperature Effects	(30 -130°F)
Zero Balance	0.0025% R.O. per °F
Span	0.0015% Reading per °F

#### Loading Specifications %Rated Capacity

	200K lb	300K lb
Capacity Selection	200K lb	300K lb
Safe Load	150%	150%
Ultimate Load	300%	300%
Safe Uplift	100%	100%
Ultimate Uplift	110%	155%
Safe Sideload (Axial)	20%	50%
Ultimate Sideload (Axial)	40%	105%
Safe Sideload (Trans.)	85%	55%
Ultimate Sideload (Trans.)	170%	110%

#### Material

Beam	ultra high strength steel
Brackets	ductile iron
Environmental Class	NEMA 6, IEC IP 67
Moisture Protection	IEC 68-2-4 test D, 200 cycles (min)

#### Deflection Under Load and Unit Weight

CAPACITY	DEFLECTION	WEIGHT
200K lb	0.029 in.	250 lb
300K lb	0.050 in.	300 lb

#### Corrosion Protection

KDH-1B	zinc chromate beam painted hardware
--------	--

#### Termination

200K, 300K	10m (32', 10") cable with conduit fitting
------------	--

#### Approvals

FM (Factory Mutual)	3611 (Class I, II, III; Div.1,2; Groups A-G)
CSA	C22.2 (Class I, II, III; Div.1,2; Groups A-G)

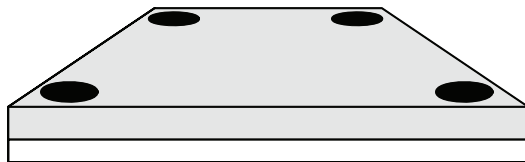
#### Documentation List

Outline Drawing	# 472456-3
-----------------	------------

**NOTES:** Many performance specifications are proven on a statistical sample basis.

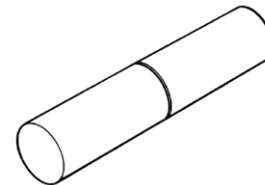
BLH is continually seeking to improve product quality and performance. Specifications may change accordingly.

### WEIGH MODULE ACCESSORIES



#### Thermal Insulation Pads

Thermal insulation pads reduce heat conducted from a heated vessel. The pads are made of rigid laminate with extremely low thermal conductivity. BLH recommends using insulation pads if the vessel mounting surface temperature exceeds 52C (130F). Pads are 1 inch thick with bolt spacing identical to module top plates.



#### Dummy Beams

Optional dummy beams are solid steel shafts with the same dimensions as the corresponding KDH-1 beam. Dummy beams are used in place of the KDH-1 beams during the installation process. Using dummy beams eliminates the risk of damaging precision KDH-1 beams while welding and/or positioning the weigh vessel.

## Disclaimer

ALL PRODUCTS, PRODUCT SPECIFICATIONS AND DATA ARE SUBJECT TO CHANGE WITHOUT NOTICE.

Vishay Precision Group, Inc., its affiliates, agents, and employees, and all persons acting on its or their behalf (collectively, "Vishay Precision Group"), disclaim any and all liability for any errors, inaccuracies or incompleteness contained herein or in any other disclosure relating to any product.

The product specifications do not expand or otherwise modify Vishay Precision Group's terms and conditions of purchase, including but not limited to, the warranty expressed therein.

Vishay Precision Group makes no warranty, representation or guarantee other than as set forth in the terms and conditions of purchase. **To the maximum extent permitted by applicable law, Vishay Precision Group disclaims (i) any and all liability arising out of the application or use of any product, (ii) any and all liability, including without limitation special, consequential or incidental damages, and (iii) any and all implied warranties, including warranties of fitness for particular purpose, non-infringement and merchantability.**

Information provided in datasheets and/or specifications may vary from actual results in different applications and performance may vary over time. Statements regarding the suitability of products for certain types of applications are based on Vishay Precision Group's knowledge of typical requirements that are often placed on Vishay Precision Group products. It is the customer's responsibility to validate that a particular product with the properties described in the product specification is suitable for use in a particular application.

No license, express, implied, or otherwise, to any intellectual property rights is granted by this document, or by any conduct of Vishay Precision Group.

The products shown herein are not designed for use in life-saving or life-sustaining applications unless otherwise expressly indicated. Customers using or selling Vishay Precision Group products not expressly indicated for use in such applications do so entirely at their own risk and agree to fully indemnify Vishay Precision Group for any damages arising or resulting from such use or sale. Please contact authorized Vishay Precision Group personnel to obtain written terms and conditions regarding products designed for such applications.

Product names and markings noted herein may be trademarks of their respective owners.